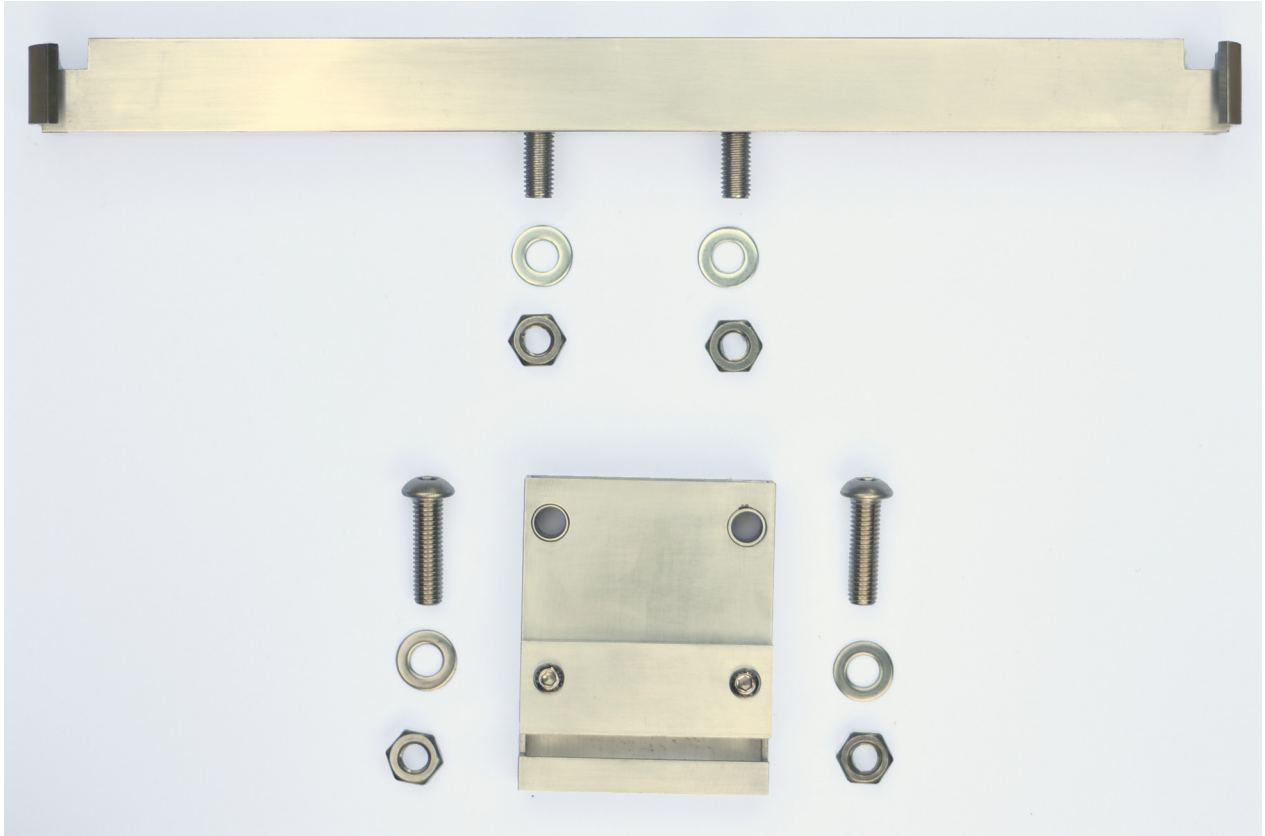


# Manual

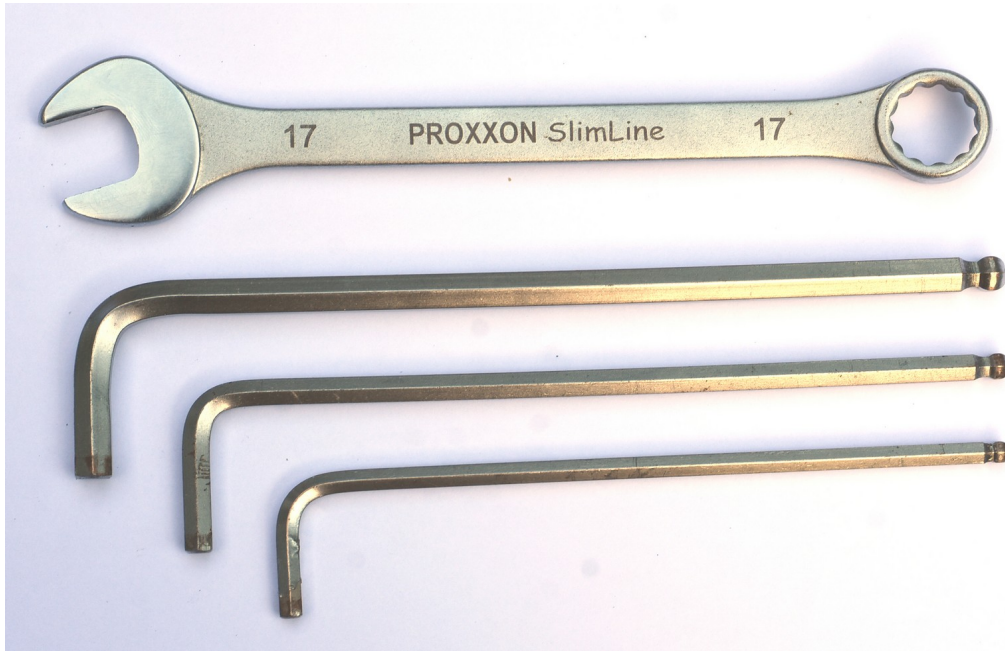
Box-holder for Omnium Cargo and Zarges 40862



Last Change: 27.10.23

# Required Tools

- Open-end wrench: 17 mm.
- Hex wrench: 4 mm, 6 mm, 8 mm.



## Torque

In the following description torque is used to describe how strong the screws have to be tightened. If you don't have a torque wrench, here is some help for you.

- |       |  |
|-------|--|
| 6-8Nm | Is the hex wrench about 20cm long, you have to put a force which equates to 4kg. |
| 6-8Nm | Is the hex wrench about 25cm long, you have to put a force which equates to 8kg. |

# Assembly

## 1. Omnium rack disassembly

Remove the x4 M10 screws which are connecting the rack to the frame.

Remove the rack.



## 2. Crossbar assembly

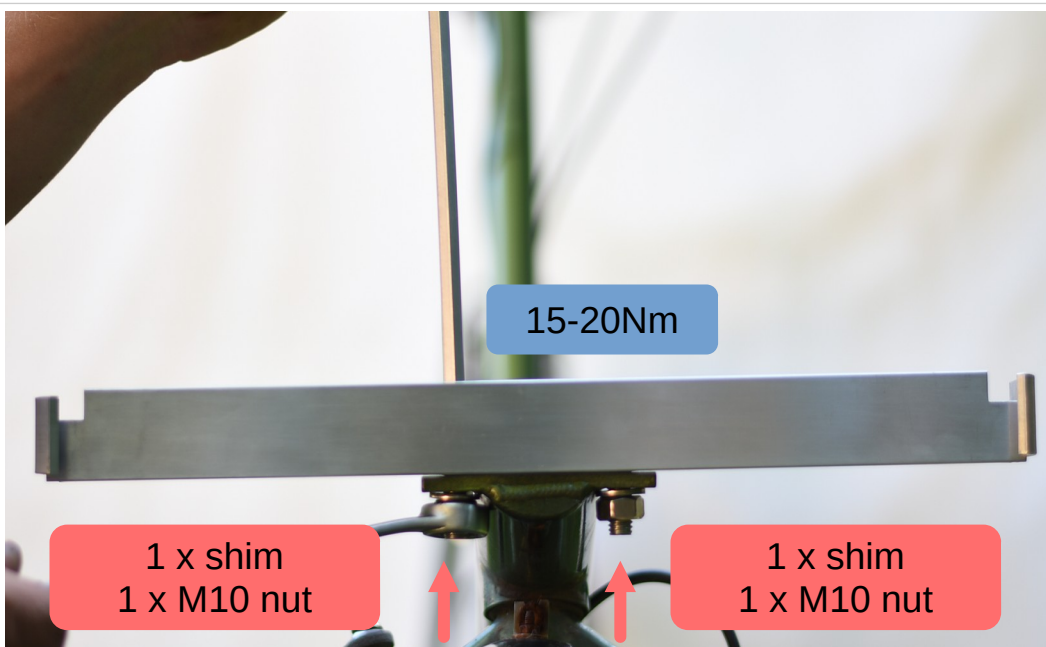
Remove the x2 M10 nuts and shims at the crossbar.

Set the crossbar with the x2 M10 screws on the slotted holes top of the front wheel.

The arrow on top of the crossbar shows forward.

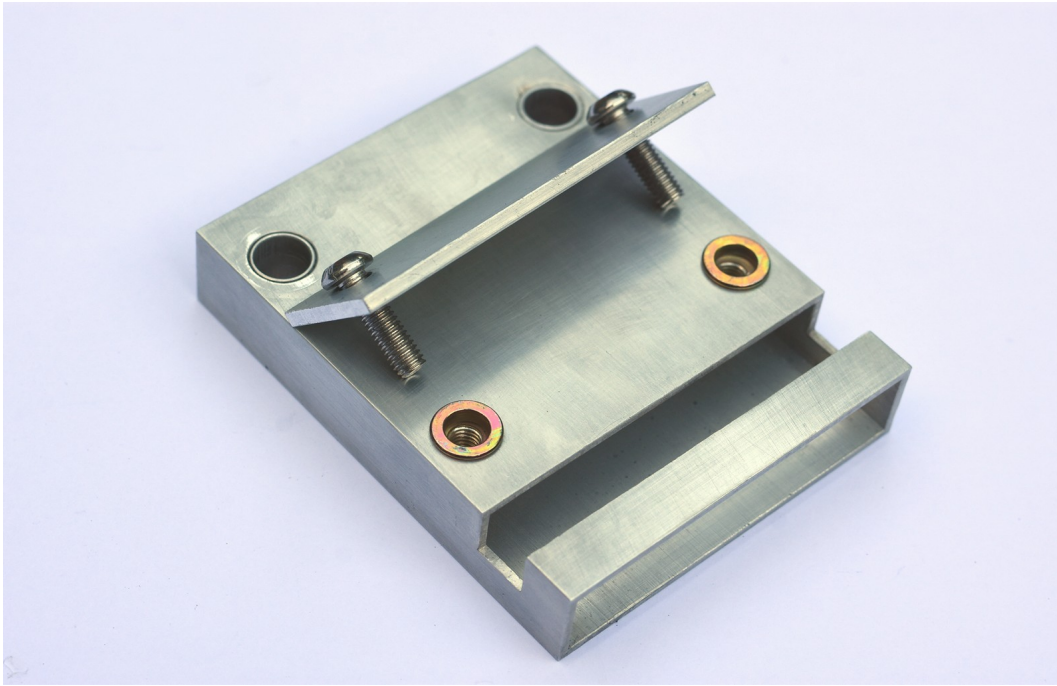


Put the shims and nuts on the screws and tighten them up with 15Nm bis 20Nm.



### 3. Square holder assembly

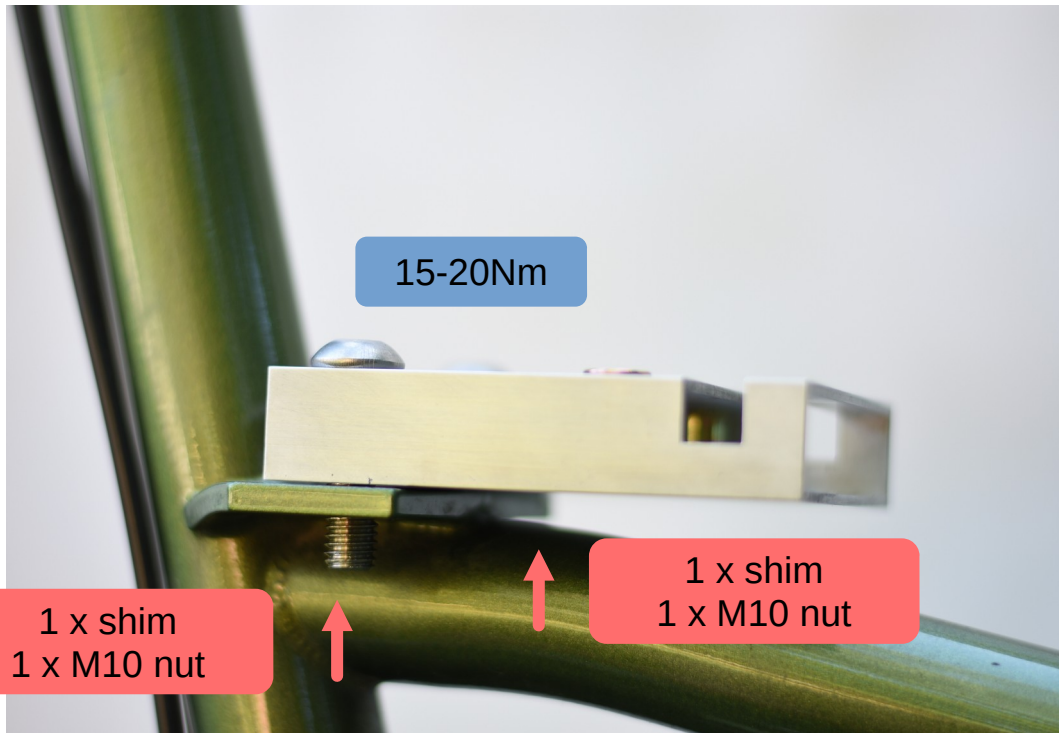
Remove the x2 M6 screws and put the clamping plate asside.



Remove x2 M10 nuts and shims at the square holder

Set the square holder with the x2 M10 screws on the slotted holes below the handle bar.

Put the shims and nuts on the screws and tighten them up with 15Nm bis 20Nm.

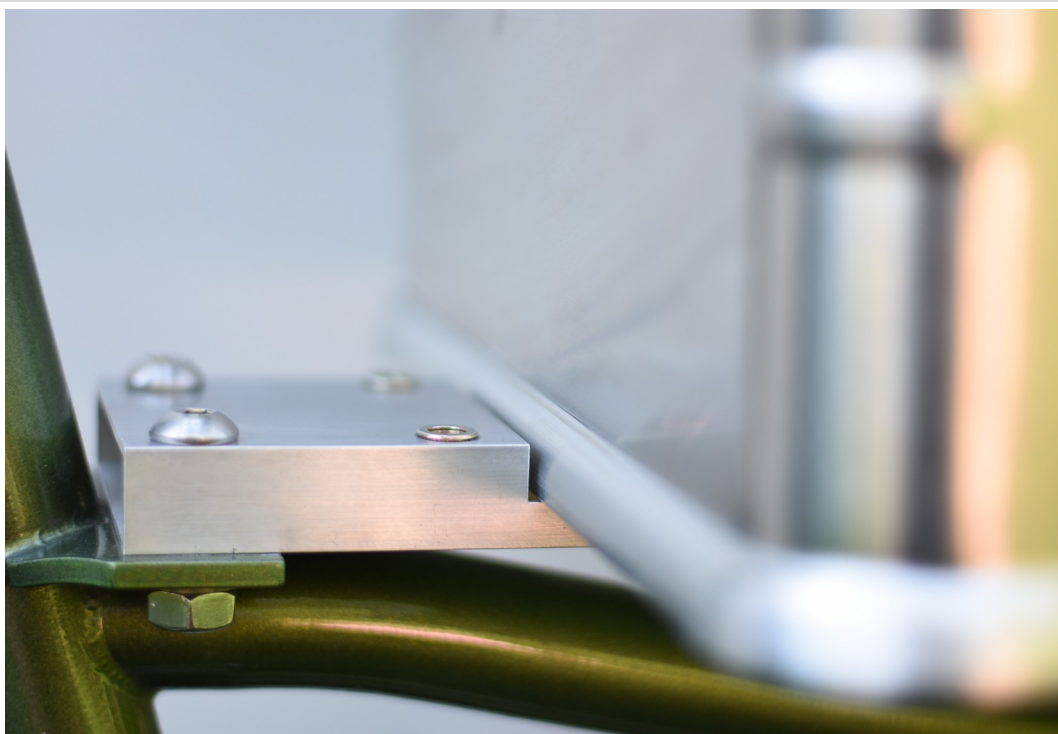


#### 4. Attach the box

Loose the 2x M6 screws at the sides of the crossbar and set the clamps downward.

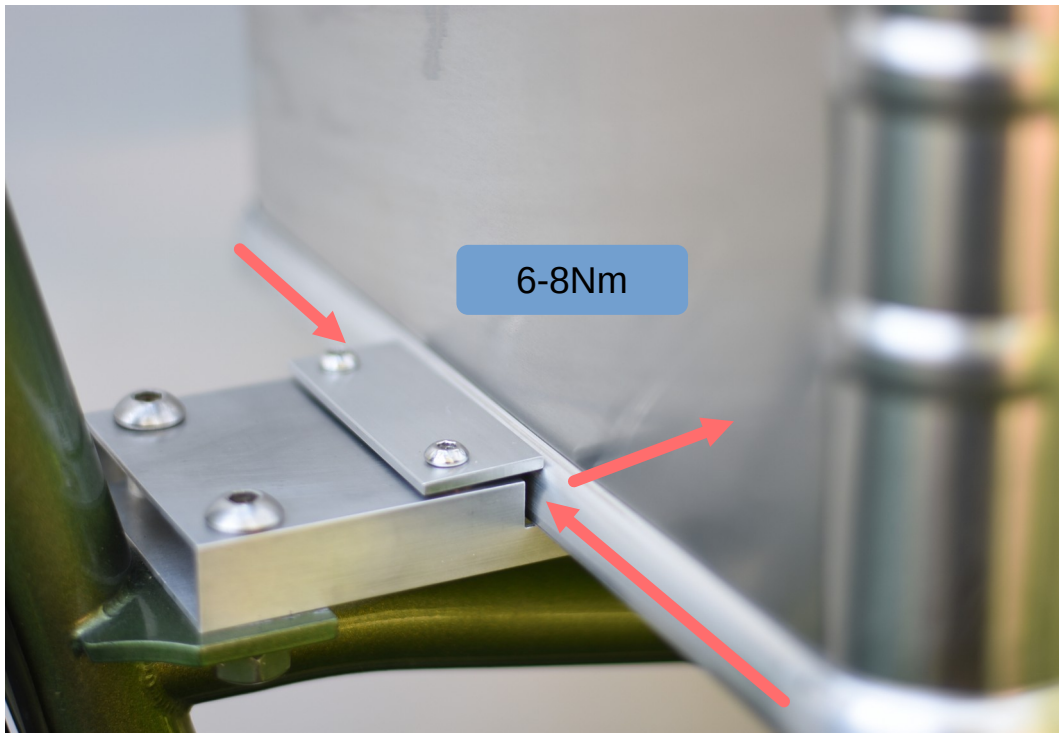


Put the box in the slots of the square holder and the crossbar.

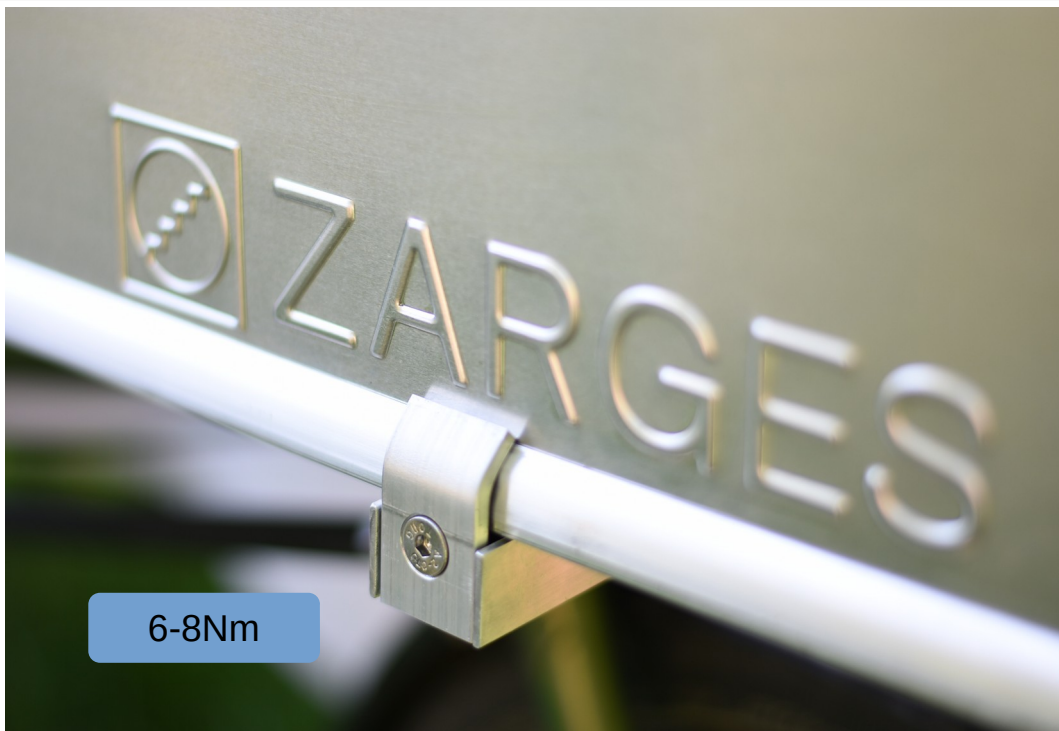


Set the box in the middle of the slot and push it forward.

Assamble the clamping plate and tighten up the 2x M6 screws with 6Nm bis 8Nm.



Put the two clamps at the crossbar up and tighten the screws with 6Nm bis 8Nm.



**Done!**  
**Enjoy your ride!**